

CollabNet® Migration Services

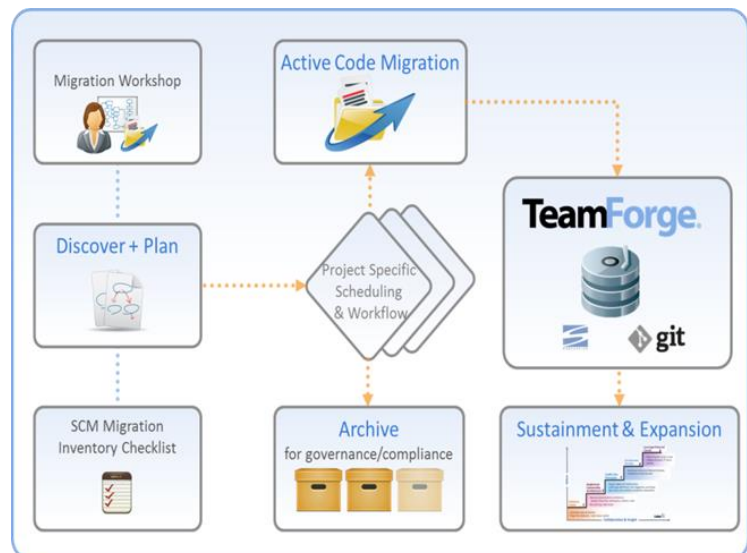
Migrate from ClearCase® with Confidence

Overview

IBM Rational ClearCase is a legacy software configuration management (SCM) tool that is increasingly becoming a liability for IT organizations and development teams. Today, the costs, complications and compromises of managing teams with ClearCase are prohibitive and unnecessary. ClearCase doesn't support today's agile methodologies, has a high cost of ownership (e.g., admin:user ratio, hardware requirements, license fees, annual support and maintenance costs), it doesn't support distributed development, and can simply be too much for a new project team.

Rational Team Concert is not the answer either. Due to RTC's silo'd project structure, lack of project hierarchy, and expensive/loose IBM point tool integration, RTC results in weak ALM traceability and does not enable development collaboration, process repeatability, or visibility across projects. Many organizations are modernizing their development and IT practices by moving from ClearCase to CollabNet TeamForge to drive top and bottom line results and achieve their development and business objectives.

We have helped tens of thousands of users successfully replace ClearCase with TeamForge, and we can provide you the confidence you need to embark on your migration. CollabNet Services has services created offerings to help organizations migrate from ClearCase to TeamForge with confidence. Migrating to CollabNet TeamForge can be accomplished in a variety of ways, providing flexibility to project teams. Our experience working with other clients shows that you obtain optimal results in a migration when you organize the project into three key parts.



- Discover and plan
- Active Code Migration and Archiving
- Sustainment and Expansion

Discover and Plan

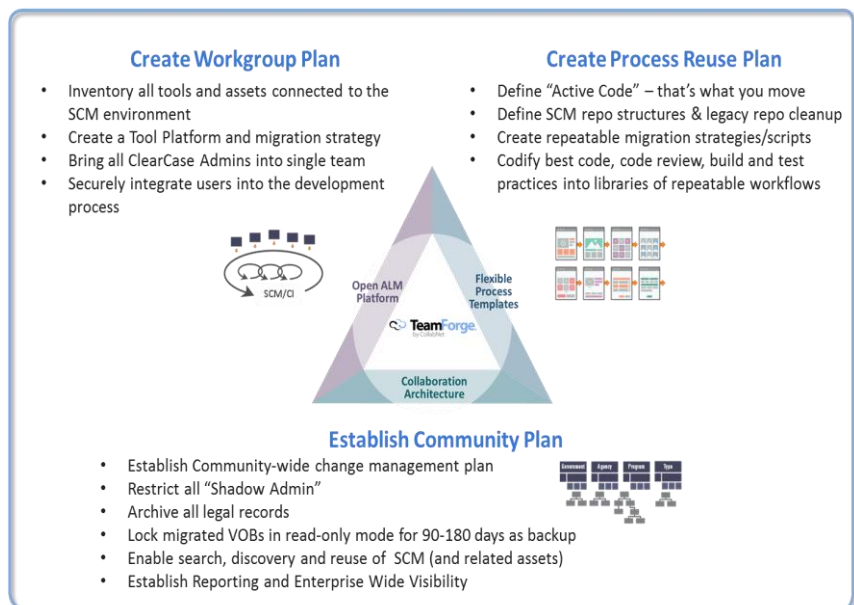
In the first step of migrating from ClearCase to TeamForge, we work with you using an Applied Workshop to help you identify your requirements, define a logical version control process, and choose the best approach for implementing your new processes

Data migration is an important factor in determining how a team will execute a conversion project. CollabNet has found that a majority of projects do not require extensive data migration. Many groups can benefit from a Snapshot Migration, which is a migration that does not involve historical data—only the key revisions are migrated. The Snapshot Migration is an approach that provides a rapid and inexpensive way to migrate to your new ALM system. Of course, other situations that require partial or full migration of data are also easily handled with CollabNet Services. The bottom line is that in this phase we help you define what to migrate, how to migrate it, and the new structure for your migrated system.

Specifying your new version control strategy is especially important at this phase. Because of its extended capabilities and enhanced ease of use, TeamForge dramatically increases collaboration and enables entirely new ways of accomplishing common and complex tasks. Using these new capabilities, CollabNet can help you enhance your business processes and adopt industry best practices within your organization.

The deliverables of the workshop include:

1. A migration workshop report containing the findings of the current ClearCase installation (VOB and server landscape, workspace organization, integrations, processes and dependencies)
2. An initial configuration management plan containing the general layout of the future infrastructure, the access control model, the branching & merging strategy, and the handling of meta information
3. An initial VOB inventory with a categorization of the VOB content and the associations and dependencies related to the projects
4. A high-level project plan for the various phases of the migration, including the
 - a. Workgroup Plan – creating a workgroup inventory and point of view for the tool level platform and migration strategy



- b. Process Reuse Plan – creating organizational wide standards and process templates for SCM repo structures, code cleanup, migration strategies and scripts, and best practices for code, code review, build and test
- c. Community Plan – Establishing a community-wide change management plan to facilitate the search, discovery and reuse of SCM (and related) assets as well as to establish enterprise-wide reporting and visibility

Active Code Migration and Archiving

The bulk of the transformation work for any migration from ClearCase to TeamForge is contained in two workstreams in this phase. The first workstream is enabling the usage of TeamForge throughout your organization; the second is conversion from the old system.

Usage of TeamForge is straightforward, and broad adoption in many organizations has proven its ease-of-use. CollabNet has multiple service packages that help you deploy TeamForge and implement the best practices that were generated in the Discover and Plan phase. Depending on the amount of assistance you desire, we can conduct or help you to complete the following: installation and configuration of TeamForge, definition and implementation of roles and permissions, implementation of your new processes, end user training, and system administration training.

Based on the data migration strategy created in the Discover and Plan phase, we will work with you to migrate your existing information into TeamForge. To assist in the migration, CollabNet has created automated tools that increase the accuracy and quality of the overall data migration.

Sustainment and Expansion

Your ultimate goal is a full and robust adoption of TeamForge, not just a migration of your old system. Leveraging the success of hundreds of client engagements, CollabNet has developed a systematic approach to establishing and nurturing collaborative communities that are a hallmark of successful organizations.

CollabNet offers specific guides, like the Community Manager Cookbook, along with full on-site services like the Community Manager, to help organizations drive broad community adoption. Our experts offer best practice approaches to:

- Reduce project ramp time
- Accelerate on-boarding
- Increase code reuse
- Ease training
- Improve distributed development
- Adopt new processes
- Define, track and act on success metrics to create a continually improving community.

Next Steps

CollabNet TeamForge provides significant advantages over IBM ClearCase, and CollabNet Services provides a proven and cost effective method for migrating to TeamForge. CollabNet offers custom consulting to handle the most complex migrations, but most conversions can be handled with packaged services. These services include the CollabNet Applied Workshop, Migration Mentoring Workshop, TeamForge Deployment, TeamForge Training, and CollabNet Community Manager.

Enterprise-grade security and compliance for Git and SVN with TeamForge

- **Integrate or Migrate.** Integrate Subversion and Git code projects, with common code governance, security and workflows.
- **Access Controls to Protect Your IP.** Enforce role-based access control (RBAC) and fine-grained permission management for read & write operations. Manage authentication and encryption for code access.
- **ALM Tools Integration.** Extend Git and SVN with defect management, code reviews and build & test automation. Choose from pre-packaged trackers, Gerrit and Jenkins. Or build your own integrations with open APIs.
- **Smarter SVN Management.** TeamForge adds central SVN server management, RBAC, SVN replication, and rich ALM and DevOps capabilities.
- **Git Code Reviews and Discovery.** Simplify code reviews with inline comments & side-by-side displays. Automate code checks with Jenkins, and manage workflows via your favorite client. Instantly discover lost code with search
- **Git/Gerrit History Protection.** TeamForge has an 'undo button' for Git code commits that delete portions of the repository. Safely roll-back updates, even otherwise 'non-revocable' commits. Intercept 'history rewrite attempts' and record temper-proof audit trails
- **Enterprise Support** – global 24/7 Support

About CollabNet TeamForge®

TeamForge, CollabNet's flagship product, is the industry's only open and extensible collaborative software development and delivery platform for distributed teams. It helps organizations of all sizes improve their collaboration, agility, processes, IPs, and tools via a centralized, secure, web-based system. With TeamForge your entire organization can develop and deploy software and become more agile at scale, with the ability to scale to tens of thousands of users.

About CollabNet

CollabNet® is the creator of Subversion® and a pioneer in cloud-based ALM solutions for collaborative agile software delivery at scale. CollabNet provides industry-leading products plus agile consulting and training services to help organizations of all sizes develop and deploy software faster. CollabNet's flagship product, TeamForge®, provides customers with an open and extensible collaborative software development and delivery platform to increase collaboration and application release efficiency across larger, distributed teams. TeamForge users also gain better governance with enhanced visibility and traceability across the software development lifecycle. For smaller teams, CollabNet provides CloudForge®, a cloud-hosted version of Subversion, Git, and TeamForge that enables fast project starts on-demand. CollabNet has been recognized for 10 consecutive years as an *SD Times* 100 industry innovator and is consistently positioned as a leader within tier one industry analyst reports, including an independent research firm report on "Application Lifecycle Management Tools."

For more information, please visit www.collab.net.

2015 CollabNet, Inc.

All rights reserved. CollabNet is a registered trademark. All other trademarks, brand names or product names belong to their respective holders.

DS-111714-6



CollabNet, Inc.
4000 Shoreline Court, Suite 300
South San Francisco, CA 94080
Tel: +1 650.228.2500 | Fax: +1 650.228.2501
www.collab.net | info@collab.net

Blog: blogs.collab.net

Twitter: twitter.com/collabnet

LinkedIn: www.linkedin.com/company/collabnet-inc

Facebook: www.facebook.com/CollabNetHQ